

THE PORTUGUESE AMERICAN CITIZENSHIP PROJECT
A NON-PARTISAN INITIATIVE TO PROMOTE CITIZENSHIP AND CIVIC INVOLVEMENT



MOUNT CARMEL PARISH
NEW BEDFORD, MA

EVALUATION
OF
THE 2010 ELECTIONS

June 1, 2011

SUPPORTED BY THE
LUSO-AMERICAN
FOUNDATION

REPORT CONTENTS

STATISTICS AND SUMMARY OF WORK	3
RESULTS	4
RECOMMENDATIONS	7
APPENDIX	8

KEY STATISTICS

- **Total number of parishioners in Mount Carmel: 4,170**
- **Heads of Household registered to vote New Bedford: 1,876 (45% of all parishioners)**
- **Heads of Household registered to vote in Bristol County: 2,560**
- **All Household Members registered to vote in New Bedford: 2,547**
- **All Household Members registered to vote in Bristol County: 3,388**
- **Heads of Household in New Bedford voter turnout¹ in September 2010 – 15% (citywide turnout 13%)**
- **Heads of Household in New Bedford voter turnout in November 2010 – 48% (citywide turnout 37%)**

SUMMARY OF WORK

Mount Carmel has been an active participant in the Portuguese American Citizenship Project since 2002.

For the September or November General elections, postcards in Portuguese and English were not sent to every registered parish voter reminding them of the date, polling hours, and location of the assigned polling station for the election.

¹ Voter turnout is the number of citizens voting in an election divided by the total number of citizens registered to vote. Voter turnout statistics and graphs are based on New Bedford residents only.

RESULTS

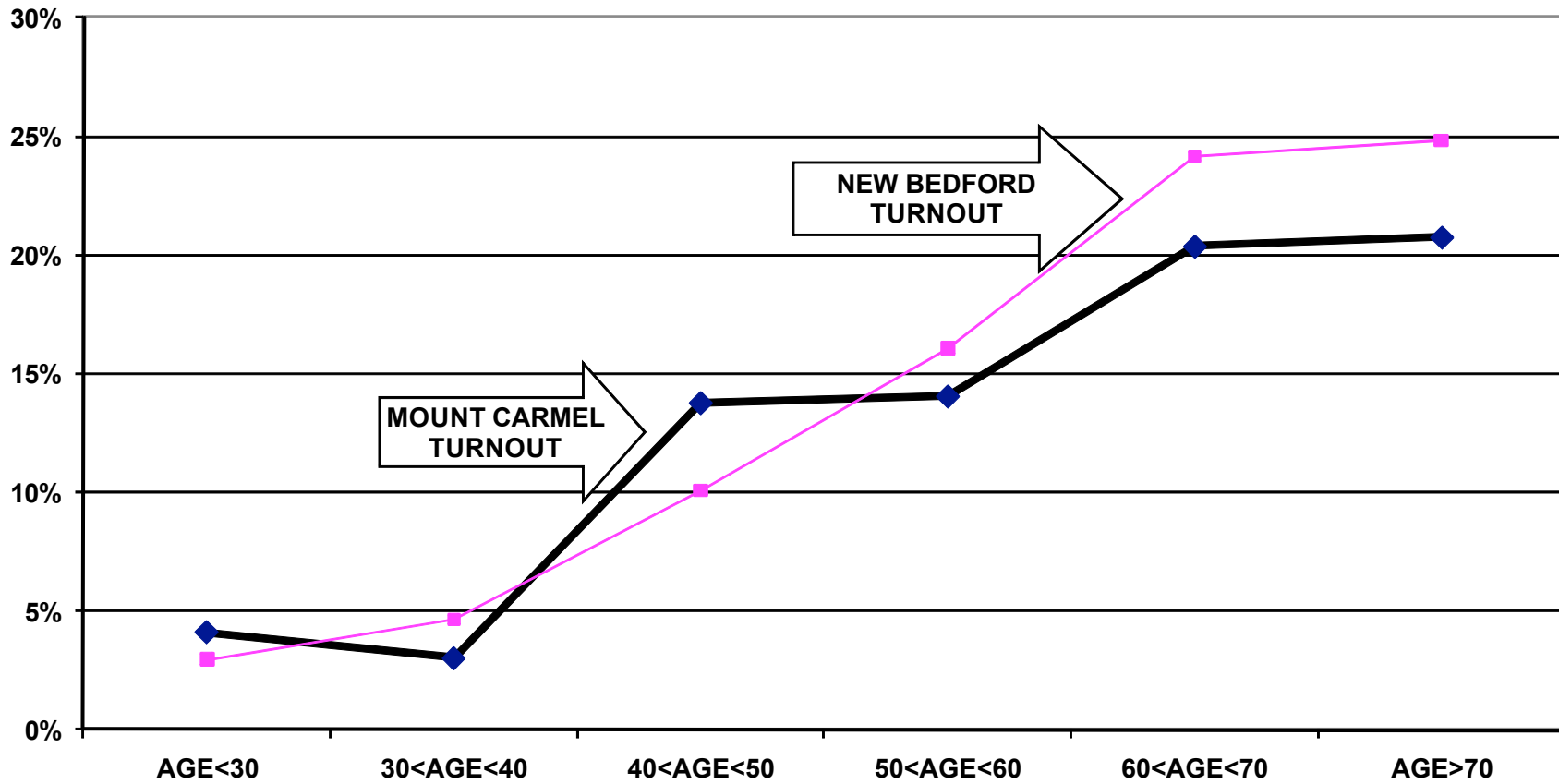
The Mount Carmel heads of household voter turnout for the September and November 2010 elections was consistently higher than citywide turnout. The Mount Carmel heads of household turnout for the September Primary Elections was 15%, as compared to the city turnout of 13%. Heads of household turnout for the November Elections was 48%, as compared to the city turnout of 37%.

Voter turnout is not uniform across age groups. Voters under 30 years of age and even those between 30 and 40 years old had lower turnout rates than the older voters. This is true for the registered voters in the parish and true for the registered voters in the community at large.

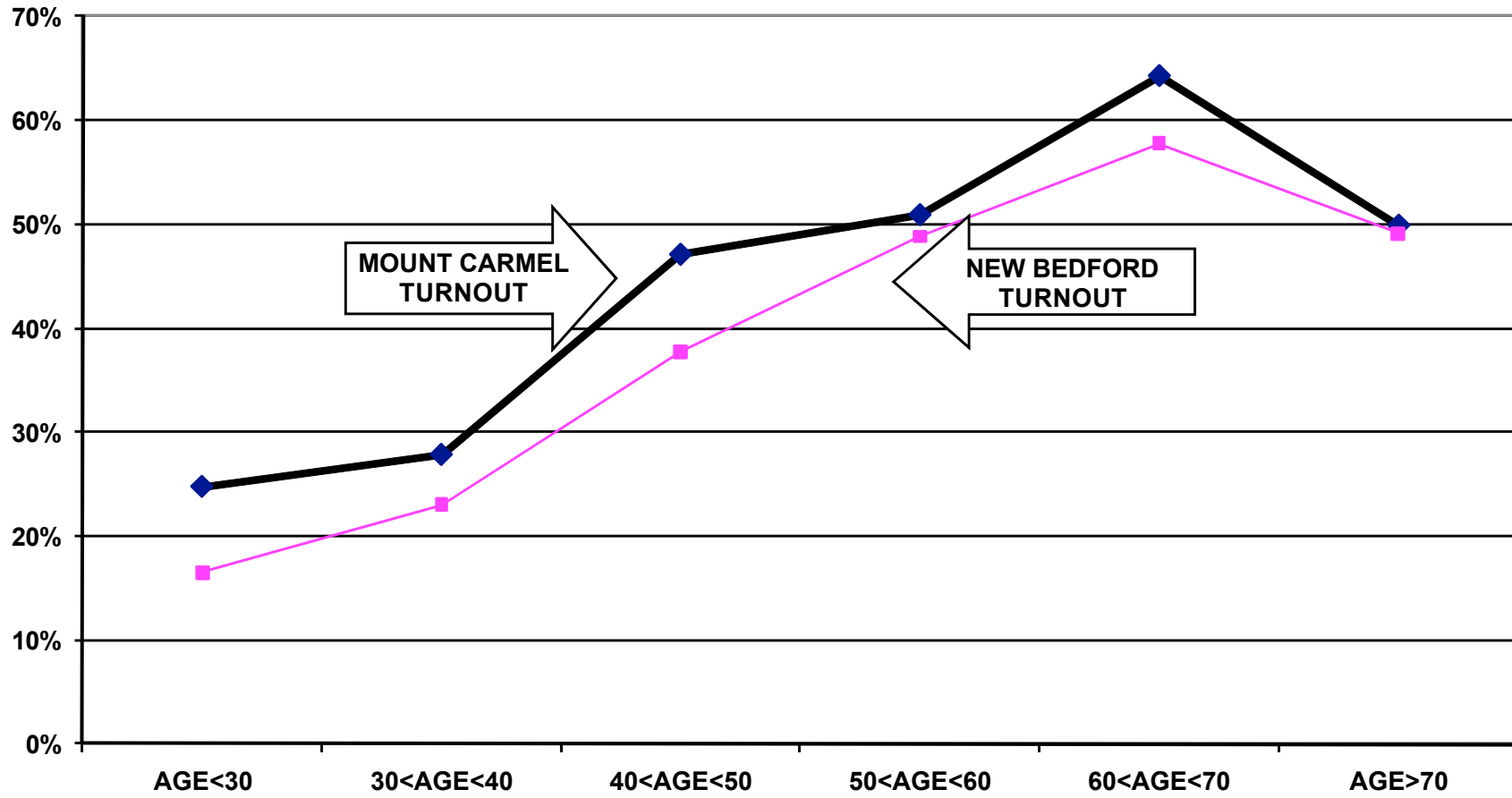
For example, for the September elections, the under 30 year old associated parishioners had an 4% turnout rate compared to a 20% turnout rate for voters between 60 and 70 years old. For the November elections, voters under 30 years old associated with the parish had a 25% turnout rate while voters between 60 and 70 years old had a 64% turnout rate.

The following graphs for the September and November 2010 elections, illustrate the relationship between turnout rates and age. These graphs are for all voters associated with the parish, not just the heads of household.

TURNOUT BY AGE SEPTEMBER 2010 MOUNT CARMEL PARISH ALL HOUSEHOLD MEMBERS



TURNOUT BY AGE NOVEMBER 2010 MOUNT CARMEL PARISH ALL HOUSEHOLD MEMBERS



RECOMMENDATIONS

- The parish must determine if and how it will provide funding for the costs of participation in the Citizenship Project. After 10 years of full financial support for the Project, the Luso American Foundation significantly reduced its funding in 2009. In 2011, the Project will continue to provide data processing and assist in the preparation of voter cards.
- If the parish cannot provide the financial support for this mailing and/or cannot accomplish the logistics of printing and mailing the voter cards, interested members of the community should examine the accomplishments of the past ten years and determine how to build on these achievements using alternative methods of promoting civic participation.

APPENDIX

Historical Data	9
Registered Voter Turnout Graph	10
Difference in Voter Turnout Graph	11
Voter Registration by Age and Gender Graph	12
Registered Voters vs. Actual Voters September 2010 Graph	13
Registered Voters vs. Actual Voters November 2010 Graph	14

**HISTORICAL DATA: MOUNT CARMEL PARISH
REGISTRATION - VOTING**

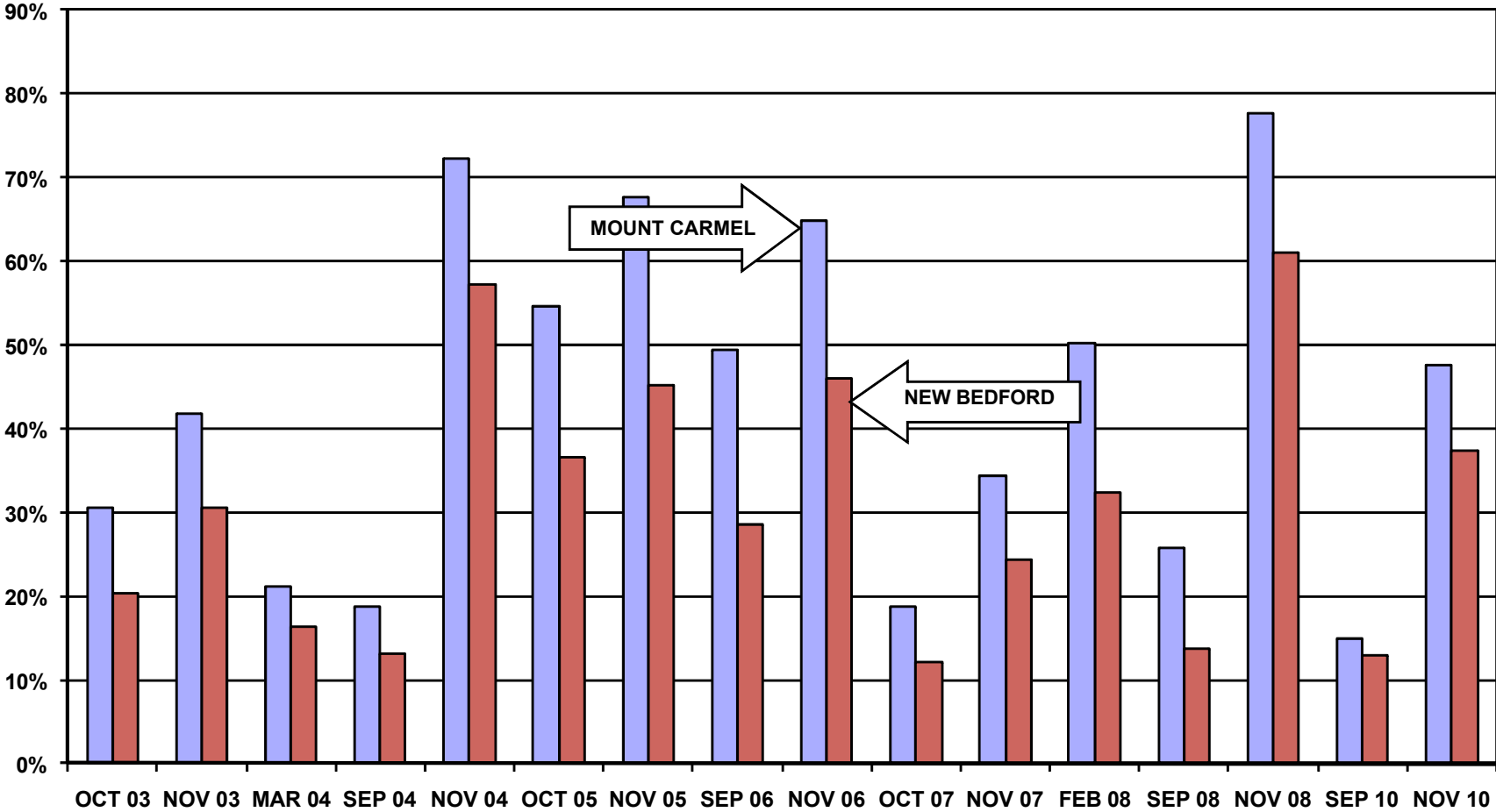
**HEADS OF HOUSEHOLD REGISTERED
TO VOTE IN NEW BEDFORD** 1,876

**ALL HOUSEHOLD MEMBERS REGISTERED
TO VOTE IN NEW BEDFORD** 2,547

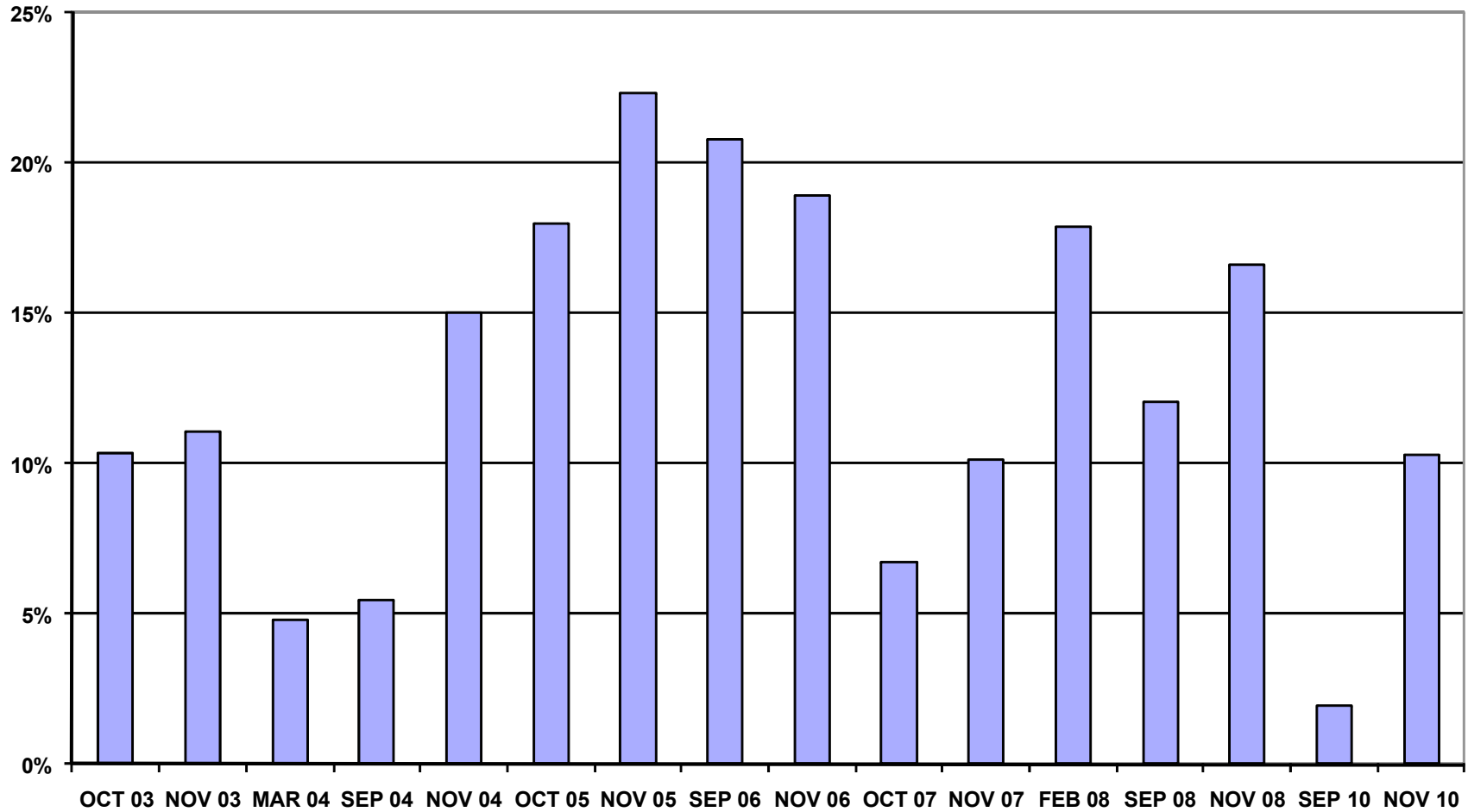
VOTING PERFORMANCE OF NEW BEDFORD RESIDENTS

	HEADS OF HOUSEHOLD WHO VOTED	AS PERCENT OF ALL REGISTERED MEMBERS ELIGIBLE TO VOTE	CITY WIDE VOTING HISTORY AS PERCENT OF ALL REGISTERED VOTERS)
	COMPARABLE STATISTICS		
VOTERS NOV 2003	861	41.7%	30.6%
VOTERS MAR 2004	437	21.1%	16.4%
VOTERS SEP 2004	385	18.6%	13.2%
VOTERS NOV 2004	1492	72.3%	57.3%
VOTERS OCT 2005	900	54.5%	36.7%
VOTERS NOV 2005	1117	67.7%	47.6%
VOTERS SEP 2006	825	49.3%	29.5%
VOTERS NOV 2006	1086	64.9%	46.0%
VOTERS OCT 2007	315	18.3%	12.1%
VOTERS NOV 2007	576	33.4%	24.3%
VOTERS FEB 2008	929	50.3%	32.4%
VOTERS SEP 2008	477	25.8%	13.7%
VOTERS NOV 2008	1434	77.6%	61.0%
VOTERS SEP 2010	280	14.9%	13.0%
VOTERS NOV 2010	894	47.7%	37.4%

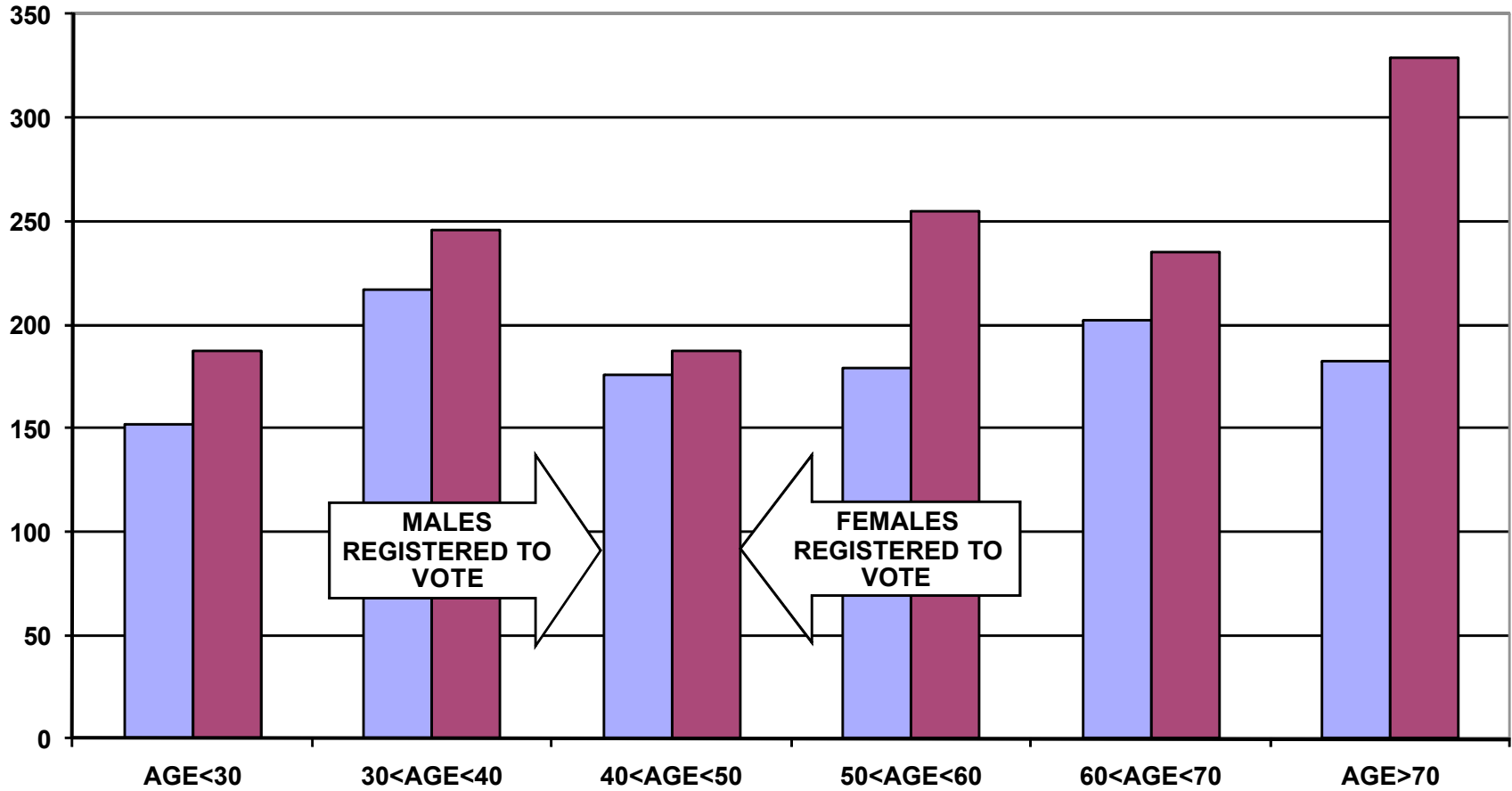
REGISTERED VOTER TURNOUT COMPARISON BETWEEN NEW BEDFORD AND MOUNT CARMEL HEADS OF HOUSEHOLD



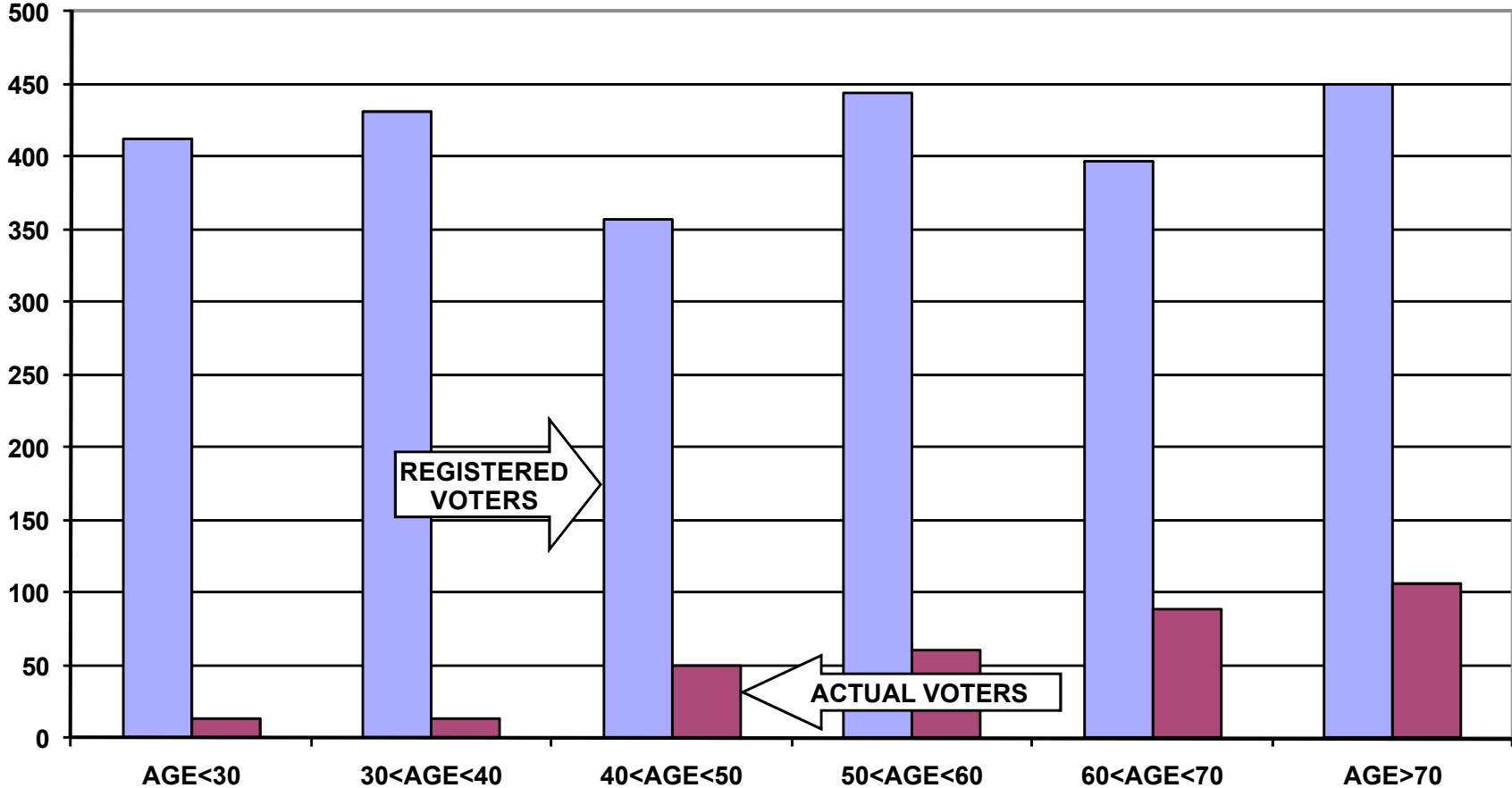
DIFFERENCE IN VOTER TURNOUT BETWEEN MOUNT CARMEL VOTERS AND NEW BEDFORD VOTERS HEADS OF HOUSEHOLD



**VOTER REGISTRATION BY AGE AND GENDER
MOUNT CARMEL PARISH
ALL HOUSEHOLD MEMBERS**



**REGISTERED VOTERS VERSUS ACTUAL VOTERS SEPTEMBER 2010
MOUNT CARMEL PARISH
ALL HOUSEHOLD MEMBERS**



**REGISTERED VOTERS VERSUS ACTUAL VOTERS NOVEMBER 2010
MOUNT CARMEL PARISH
ALL HOUSEHOLD MEMBERS**

